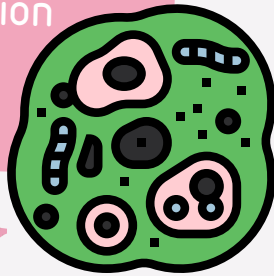


Subject Schedule

Subjects covered in your 7th Grade Science Class

Term One:

- Lab Safety
- Cell Structure & Function
- Heredity



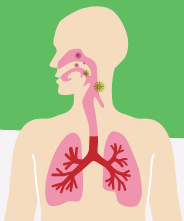
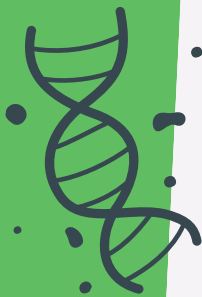
To Remember:



- Assignments not completed in class must be completed as HW
- HW is assigned as needed.
- Record HW in planner

Term Two:

- Heredity
- Body Systems



Term Three:

- Natural Selection & Adaptations
- Biodiversity



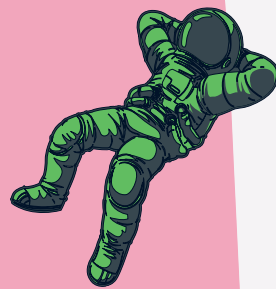
To Remember:



Each subjects will be addressed again in future science classes. You will be required to use a composition notebook.

Term Four:

- Space Exploration
- Ecology
- Natural & Human Events



Student Signature: _____ Date: _____

Parent Signature: _____

Science Syllabus

Procedures & Expectations in Mrs. Martinez' Science Class

6 Bees

- Bee Positive
- Bee Creative
- Bee Passionate
- Bee Respectful
- Bee Helpful
- Bee Curious



Contact Info:



Name: Mrs. Martinez

E-Mail:

monica.penamartinez@fortbendisd.com

Voicemail: 281-634-3152

Class Routine

1. Read the board with the day's agenda.
2. Write down HW/Reminders in Planner
3. Check to make sure you have all "Needed Supplies"
4. Turn in assignments if needed.
5. Complete Warm Up

Bell Rings: What Now?

1. Listen for instructions and follow them.
2. Ask questions, write notes & stay organized

Class Info:

Learning Platform: Schoology

Required assignments given to you by Mrs. Martinez (will be turned in via paper, Schoology or in your ISN)

Announcements: Check Schoology daily (calendar)

Supplies ISN, Pencil, Tape, Colored Pencils, Scissors, highlighter

Tutorials: Wednesday Mornings (8:20 am) or by Appointment



Grading Scale

50% Daily Grades

(Quizzes, class assignments)



50% Major Grades

(Major Labs, Projects, Assessments)



Discipline

All discipline procedures will follow the outline given out in the student handbook. For more details, please contact Ms. Sweeney Grade Level Principal.



Personal Items

Please keep in your backpack:

- Personal electronics (cell phones, tablets, headphones, etc.)
- Earpods
- Lunch Boxes
- Food & Drink



All items that are of a personal nature must be put away unless given permission to have out.

Group Work



Science requires group work. Either in a lab, a project or class challenge. Be prepared to participate to the best of your ability.



Late Work

- 10 point deduction each day an assignment is late.
- No Zeros allowed. Even if late, turn in all assignments within the grading term.

Progressive Testing



- We will utilize Progressive Testing in Sci 7. This option allows students to re-test non-mastered objectives by including the material on the next comprehensive exam. The grade made on this exam will substitute the initial grade.
- The progressive testing cycle ends with the last test of each 9 week grading period, meaning that the grade on the last progressive test of the cycle will stand.

AAC Project: Explore

All AAC students are required to complete the Explore Project for Science. The entire project will be completed outside of class. Instructions and checkpoints will be given in class. GT students are required to complete an independent research project.



Absences

- Check the Schoology Daily Agenda slide and see what we did that day
- Contact Mrs. Martinez (email or Schoology) with questions.
- When you return to school, pick up any handouts from the Absence Bin.
- Complete any online assignments/notes, update ISN
- Attend tutorials for any make up quizzes/tests, extra support
- 1 day extension for each day absent



Tardies

Please take care of all personal needs before you come to class.

- 1st-Student Conference
- 2nd-Parent Contact
- 3rd-Teacher Detention
- 4th+ Office Referral

Interactive Science Notebooks (ISN)

- Students are required to maintain an organized and complete ISN in class, every day.
- Periodic notebook checks will be conducted.



Passes

We follow the Campus 10-10 rule. No passes out of the class the first and last 10 minutes of class. If requesting RR, you must sign in/out on log, and take pass when permission is granted.

