



# Thoughtful Solutions

*To Academic Structuring in Fort Bend ISD*

**FBI<sup>★</sup>SD**  
INSPIRE • EQUIP • IMAGINE

Thoughtful Solutions

*To Academic Structuring in Fort Bend ISD*



## Mission Statement

FBISD exists to inspire and equip  
all students to pursue futures  
beyond what they can imagine.

# Thoughtful Solutions

*To Academic Structuring in Fort Bend ISD*



2012  
Jacobs  
Study

2013  
Community  
Dialogues

2013  
College and  
Career  
Readiness Plan

2014  
Facilities  
Master Plan

2014  
Technology  
Plan

2013-14  
Responses to  
Curriculum  
Audit

2014 Safety  
& Security

2014  
Steering  
Committee

2014 Bond  
Proposal &  
Passage

2014 Academic  
Program  
Review

2014-15  
Boundary and  
Feeder  
Pattern

Implementation



## Our Planning Journey

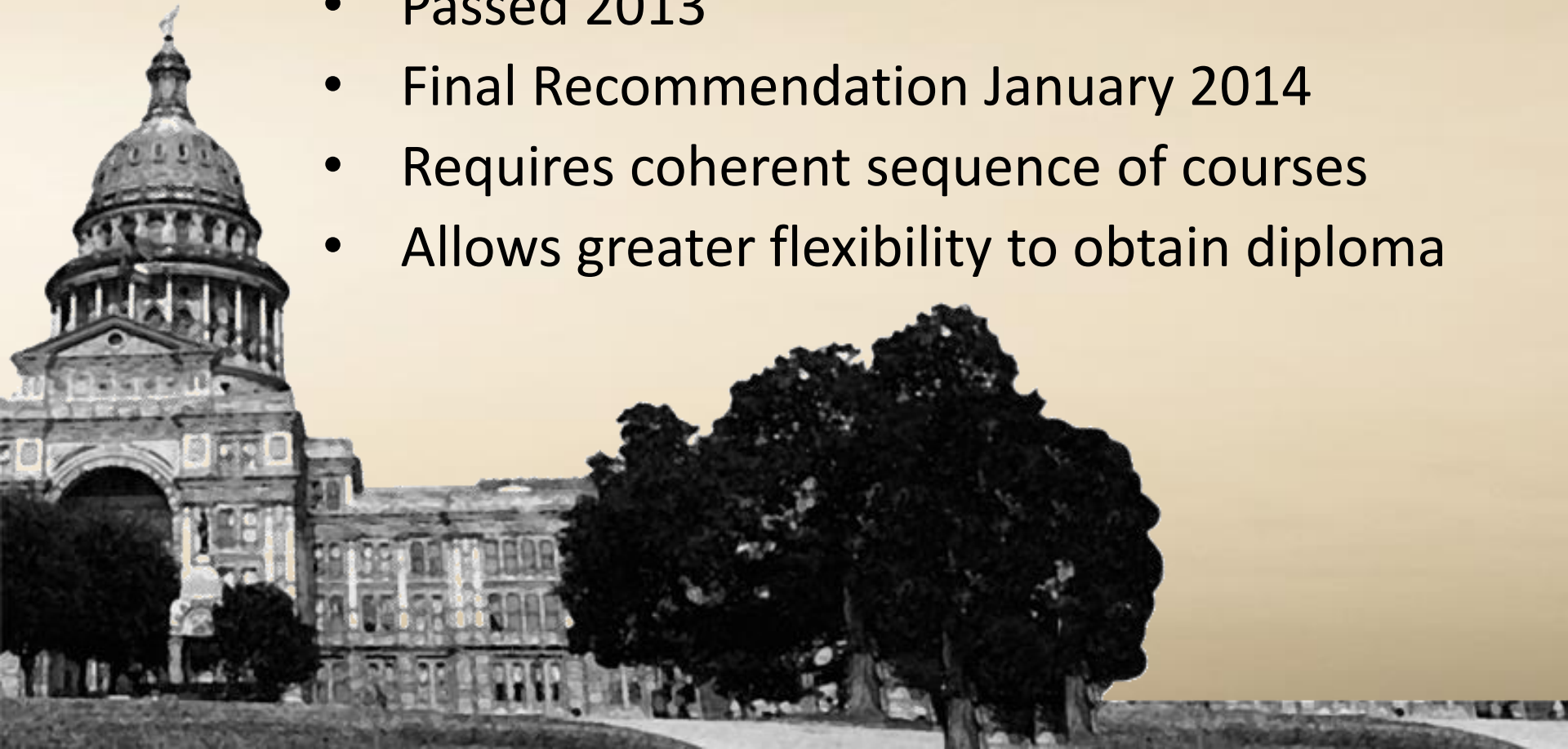
Thoughtful Solutions

*To Academic Structuring in Fort Bend ISD*



# House Bill 5

- Passed 2013
- Final Recommendation January 2014
- Requires coherent sequence of courses
- Allows greater flexibility to obtain diploma





Thoughtful Solutions

*To Academic Structuring in Fort Bend ISD*



# Structuring Challenge



# Thoughtful Solutions

*To Academic Structuring in Fort Bend ISD*





# Thoughtful Solutions

*To Academic Structuring in Fort Bend ISD*





# Thoughtful Solutions

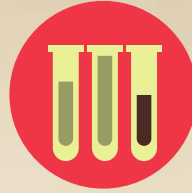
*To Academic Structuring in Fort Bend ISD*





# Thoughtful Solutions

*To Academic Structuring in Fort Bend ISD*





## GOALS:

1. Provide optimal student choices to fulfill expectations of House Bill 5.
2. Design programs to increase access and equity while being mindful of financial implications.
3. Establish systems to ensure programs are implemented with fidelity.

# Thoughtful Solutions

*To Academic Structuring in Fort Bend ISD*



## Programs requiring study







## Definitions

**Endorsement:** Broad Decision of Study *Example: STEM*  
(Science, Technology, Engineering, Math)

**Pathway:** Specific direction to achieve that endorsement  
*Example: Math, Computer Science, Robotics, Electronics*  
*Consists of 4 credits in a coherent sequence*

# Thoughtful Solutions

To Academic Structuring in Fort Bend ISD



Career &  
Technical  
Education

Campus  
Endorsements  
/Pathways

## Endorsements

	STEM	Business/Industry	Public Services	Arts & Humanities	Multidisciplinary Studies
Pathways	Engineering Biomedical Science Math Science Computer Science/AP Electronics Robotics	Animal Science Plant Science Ag Mechanics Architecture Architecture and Construction Fashion Design Video Production Multimedia Business Management Finance Sports Marketing Sales Hospitality and Tourism Culinary Arts Interior Design Manufacturing Transportation, Distribution and Logistics	Government & Public Administration Fire Fighting – Facilities Government & Public Administration Law Clinical Research Education & Training Cosmetology Nutrition Forensic Science	Social Studies Single Language Multiple Languages Band Choir Dance Orchestra Theatre/Theatre Production Technical Theatre Art: Two Dimensional	Select courses from the curriculum of each of the other endorsement areas; Credits in a variety of advanced courses from multiple content areas sufficient to complete the distinguished level of achievement under the foundation program



# Thoughtful Solutions

To Academic Structuring in Fort Bend ISD



HABLA  
ESPAÑOL?





### *To Academic Structuring in Fort Bend ISD*

## Science Pathway

C = current; P = proposed ; ● = courses currently being offered; □ = courses to be offered

[illegible]

## Math Pathways

C = current; P = proposed ; ● = courses currently being offered; □ = courses to be offered

	AHS		BHS		CHS		DHS		EHS		HHS		KHS		MHS		RPHS		THS		WHS	
Mathematics	C	P	C	P	C	P	C	P	C	P	C	P	C	P	C	P	C	P	C	P	C	P
5 Mathematics credits total; Inclusive of Algebra I, Geometry, Algebra II, and two additional Mathematics courses for which Algebra II is a prerequisite																						

Thoughtful Solutions

*To Academic Structuring in Fort Bend ISD*



## Career and Technical Current Status

Total CTE Enrollment

**Current:** 18,597

**2013-2014:** 14,434

Change focus from courses to in-depth learning



## Agriculture Courses

- Principles of Agriculture Food & Natural Resources
- Equine Science
- Livestock Production
- Small Animal Management
- Advanced Animal Science
- Veterinary Medical Applications
- Professional Standards in Agribusiness
- Agribusiness Management and Marketing
- Mathematical Applications in Agriculture Food & Natural Resources
- Wildlife, Fisheries & Ecology Management
- Agricultural Mechanics & Metal Technologies
- Agricultural Facilities Design & Fabrication
- Principles & Elements of Floral Design
- Landscape Design & Turf Grass Management
- Horticulture Science
- Practicum in Agriculture, Food & Natural Resources



# Thoughtful Solutions

## To Academic Structuring in Fort Bend ISD



### Ag, Food & Nat. Resources Current Course Offerings

C = current; P = proposed ; ● = courses currently being offered; □ = courses to be offered

	AHS		BHS		CHS		DHS		EHS		HHS		KHS		MHS		RPHS		THS		WHS	
Courses	C	P	C	P	C	P	C	P	C	P	C	P	C	P	C	P	C	P	C	P	C	P
Principles of Ag, Food & Nat. Resources	●	●	●	●	●	●	●	●	●	●	●	●	●	●			●	●	●	●		
Equine Science				●	●	●	●	●	●	●			●	●								
Livestock Production	●	●	●	●	●	●	●	●	●	●	●	●	●	●			●	●	●	●		
Small Animal Management			●		●						●						●		●			
Advanced Animal Science																						
Veterinary Medical Applications					●	●											●	●				
Professional Standards in Agribusiness	●	●															●	●	●			
Agribusiness Mng. and Marketing	●	●																				
Mathematical Apps in Ag																						
Wildlife, Fisheries & Ecology Management	●	●			●	●	●	●	●	●	●	●	●	●			●	●	●	●		
Agricultural Mechanics & Metal Technologies					●	●	●		●	●			●	●			●	●				
Agricultural Facilities Design & Fabrication					●	●			●	●			●	●			●	●				
Principles & Elements of Floral Design			●		●		●	●	●		●		●				●					
Landscape Design & Turf Management							●	●											●	●		
Horticulture Science																			●	●		
Practicum in Ag																						

CTE courses are currently under review by TEA; course names will change in 2016

# Thoughtful Solutions

## To Academic Structuring in Fort Bend ISD



### Ag, Food & Nat. Resources Proposed Course Offerings

C = current; P = proposed ; ● = courses currently being offered; □ = courses to be offered

Proposed course offerings would satisfy the Plant Science, Ag Mechanics and Animal Science pathways.

	AHS		BHS		CHS		DHS		EHS		HHS		KHS		MHS		RPHS		THS		WHS	
Courses	C	P	C	P	C	P	C	P	C	P	C	P	C	P	C	P	C	P	C	P	C	P
Principles of Ag, Food & Nat. Resources	●	●	●	●	●	●	●	●	●	●	●	●	●	●	□	□	●	●	●	●	□	□
Equine Science		□		●	●	●	●	●	●	●		□	●	●				□		□		
Livestock Production	●	●	●	●	●	●	●	●	●	●	●	●	●	●			●	●	●	●		
Small Animal Management			●		●						●						●		●			
Advanced Animal Science																						
Veterinary Medical Applications		□		□	●	●		□		□		□		□			●	●				
Professional Standards in Agribusiness	●	●		□		□				□		□		□		□	●	●	●			□
Agribusiness Mng. and Marketing	●	●		□		□				□		□		□		□		□				□
Mathematical Apps in Ag																						
Wildlife, Fisheries & Ecology Management	●	●		□	●	●	●	●	●	●	●	●	●	●			●	●	●	●		
Agricultural Mechanics & Metal Technologies				□	●	●	●		●	●		□	●	●		□	●	●				□
Agricultural Facilities Design & Fabrication				□	●	●			●	●		□	●	●		□	●	●				□
Principles & Elements of Floral Design		□	●		●		●	●	●		●		●				●					
Landscape Design & Turf Management		□					●	●											●	●		
Horticulture Science		□						□											●	●		
Practicum in Ag																						

CTE courses are currently under review by TEA; course names will change in 2016



## Why Focus on Pathways?

Offering more depth leads to certifications and greater preparation for college and career opportunities.



C = current; P = proposed ; ● = courses currently being offered; □ = courses to be offered

[illegible]

# Thoughtful Solutions

To Academic Structuring in Fort Bend ISD



## Health Science Proposed Course Offerings

C = current; P = proposed ; ● = courses currently being offered; □ = courses to be offered

Proposed course offerings would satisfy the Clinical Medicine, EMT, and Mental Health pathways.

	AHS		BHS		CHS		DHS		EHS		HHS		KHS		MHS		RPHS		THS		WHS	
Courses	C	P	C	P	C	P	C	P	C	P	C	P	C	P	C	P	C	P	C	P	C	P
Principles of Health Science	●	●		□		□	●	●		□	●	●	●	●		□		□		□		□
Health Science	●	●		□		□	●	●		□	●	●	●	●		□		□		□		□
Practicum in Health Science											●	●										
Medical Terminology		□		□		□		□		□	●	●		□		□		□		□		□
Anatomy & Physiology	●	●	●	●	●	●	●	●	●	●	●	●	●	●	●	●	●	●	●	●	●	●
Medical Microbiology											●	●										
Pathophysiology											●	●										
Counseling & Mental Health											●	●										
Pharmacology											●	●										
Emergency Medical Technician											●	●										

CTE courses are currently under review by TEA; course names will change in 2016

# Thoughtful Solutions

*To Academic Structuring in Fort Bend ISD*



## Current Number of Pathways/Proposed Number of Pathways

AHS	17	24	KHS	17	24
BHS	15	25	MHS	7	18
CHS	14	24	RPHS	18	25
DHS	17	26	THS	19	25
EHS	14	23	WHS	7	20
HHS	21	26			
			Current 166	Proposed 260	





## Results of Bond Passage

### **59.4 Million Career and Technology**

- Explore construction of CTE Center offering highly specialized pathways
- Consider addition to Tech Ed Center
- Renovation/addition at current high schools



## 5 Year Plan for Foreign Language

- Provide Spanish and French at each campus
- Work to add Mandarin Chinese at all campuses
- Focus on world languages related to work force need
- Research other languages to consider adding:  
(Arabic, Vietnamese, Hindi)



# Gifted and Talented Education

Gifted &  
Talented

- Comprehensive Review K-12 recommended for 2015-16
- Focus on Best Practices, Structure and Identification



Thoughtful Solutions

*To Academic Structuring in Fort Bend ISD*



## Overview Gifted Talented FBISD

Elementary 1,574

Middle School 1,586

High School 1,956

Thoughtful Solutions

*To Academic Structuring in Fort Bend ISD*



## The Faces of FBISD

1



2



3





## Fort Bend ISD Academies

### Next Steps

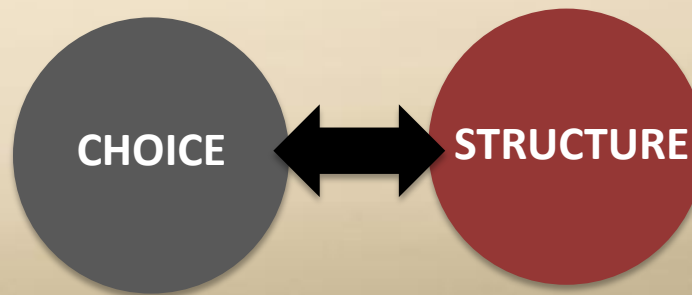
- Long Range Planning for Career and Technical Education; engage Advisory Board
- Program/staff additions at high schools for Principles of Health Science, Arts and AV, Project Lead the Way, etc.
- Update Course Catalog Selection to match streamlining and additions of courses





## GOALS:

1. Provide optimal student choices to fulfill expectations of House Bill 5.
2. Design programs to increase access and equity while being mindful of financial implications.
3. Establish systems to ensure programs are implemented with fidelity.





## Core Beliefs and Commitments

### 1. Core Belief **All students can reach their full potential.**

**Commitment:** FBISD will provide an educational system that will enable all students to reach their full potential.

### 2. Core Belief **We believe student success is best achieved...**

**A...through effective teachers that inspire learning.**

**Commitment:** FBISD will recruit, develop and retain effective teachers.

**B... in a supportive climate and safe environment.**

**Commitment:** FBISD will provide a supportive climate and a safe learning/working environment.

**C... by empowered and effective leaders throughout the system.**

**Commitment:** FBISD will provide and promote leadership development at all levels.

**D...in a well-functioning, high-performing community of learners.**

**Commitment:** FBISD will be a collaborative, efficient and effective learning community.

Thoughtful Solutions

*To Academic Structuring in Fort Bend ISD*



# ENCOURAGE



Thoughtful Solutions

*To Academic Structuring in Fort Bend ISD*



## Commonly Asked Questions

Has a decision already been made?



## Commonly Asked Questions

Would you consider moving  
the Academies to schools with  
lower enrollment?



## Commonly Asked Questions

What are the financial  
implications of the  
recommendation?



## Commonly Asked Questions

Is consideration being given to potential changes in enrollment due to boundary/feeder pattern changes?





## Commonly Asked Questions

Is consideration being given to potential changes in enrollment due to boundary/feeder pattern changes?



## Commonly Asked Questions

Is the Curriculum and  
Instruction Department  
working with all teachers to  
ensure the rigor in all courses?



## Commonly Asked Questions

What courses are required at Academies that are not required for other students?



## Commonly Asked Questions

What changes to the  
Medical Science Academy  
would be expected?